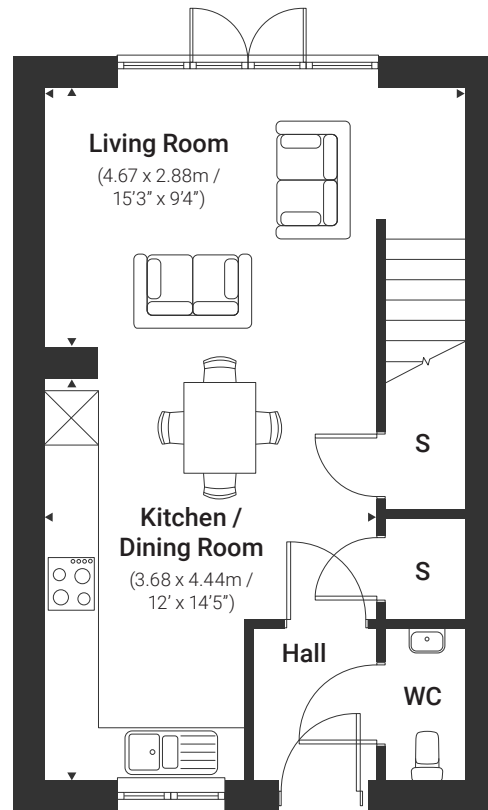


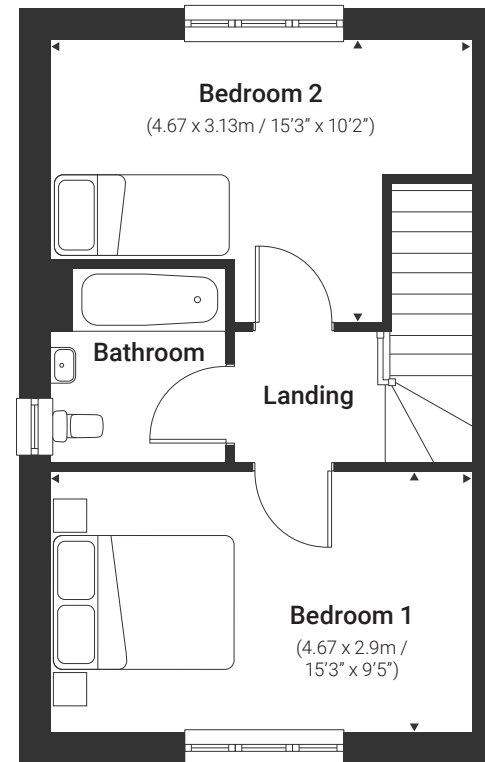
2 bedroom house

Sweetpea | The Meadows – Keresley

763 sq.ft / 70.88 sq.m
Parking | Unfurnished



Ground



First

These particulars were prepared from preliminary plans and specifications before the completion of the properties and are intended only as a guide. They may have been changed during construction and final finishes could vary. The dimensions are taken from the indicated points of measurement for guidance only and are an approximation. Images are indicative only.

S – Store WC – Toilet

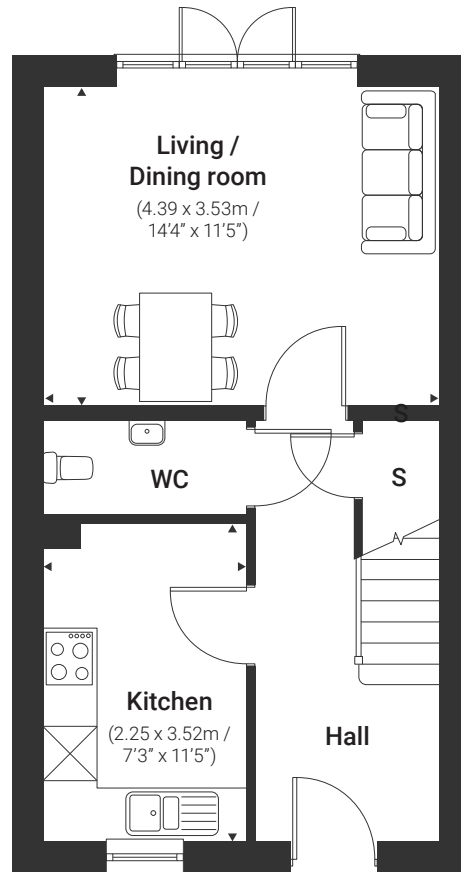
Rental
living by



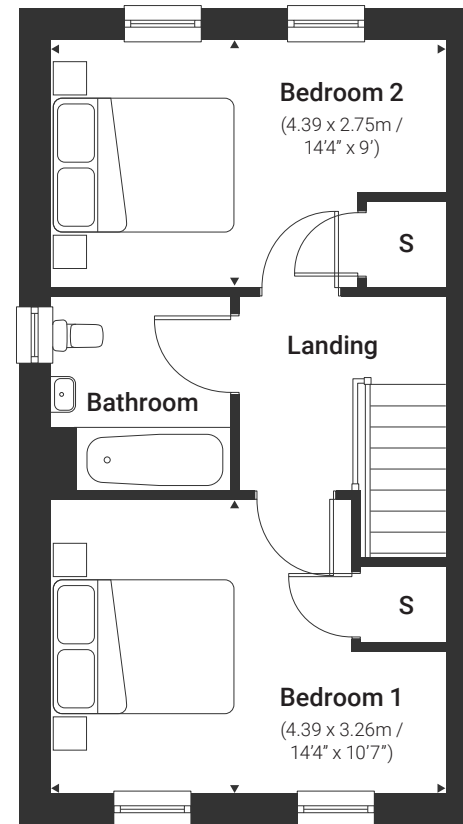
2 bedroom house

Darland | The Meadows – Keresley

779 sq.ft / 72.37 sq.m
Parking | Unfurnished



Ground



First

These particulars were prepared from preliminary plans and specifications before the completion of the properties and are intended only as a guide. They may have been changed during construction and final finishes could vary. The dimensions are taken from the indicated points of measurement for guidance only and are an approximation. Images are indicative only.

S – Store WC – Toilet

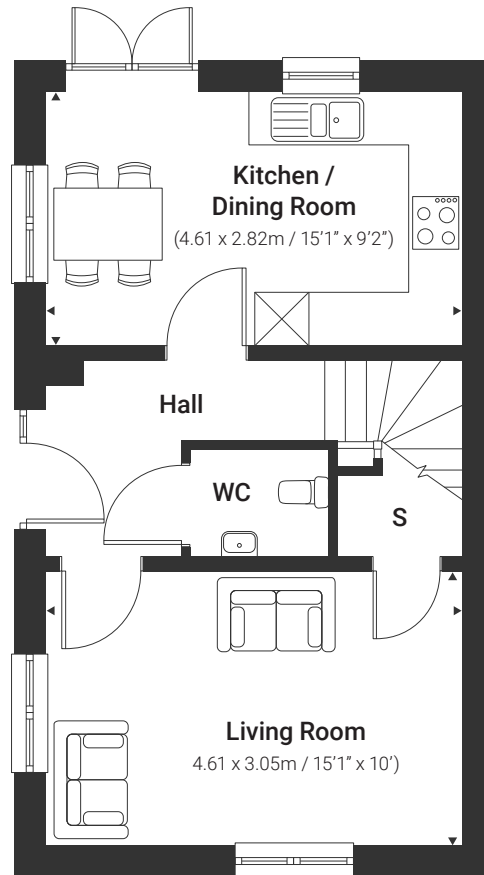
Rental
living by



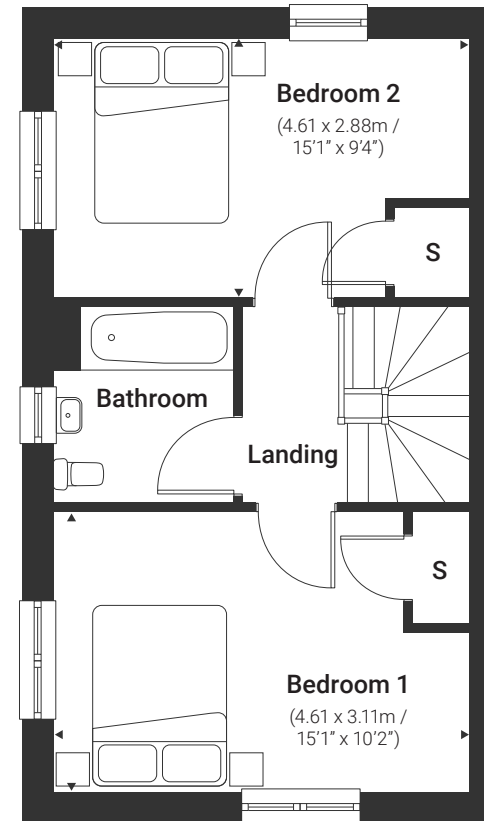
2 bedroom house

Dunlin | The Meadows – Keresley

803 sq.ft / 74.60 sq.m
Parking | Unfurnished



Ground



First

These particulars were prepared from preliminary plans and specifications before the completion of the properties and are intended only as a guide. They may have been changed during construction and final finishes could vary. The dimensions are taken from the indicated points of measurement for guidance only and are an approximation. Images are indicative only.

S – Store WC – Toilet

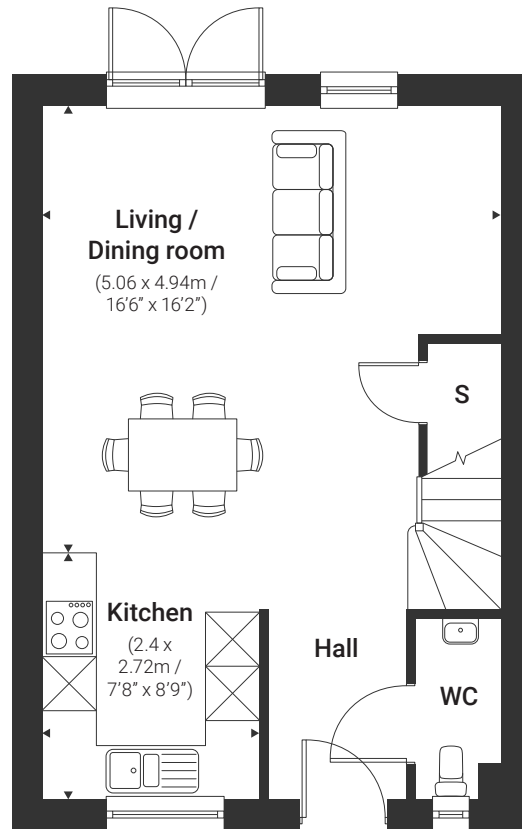
Rental
living by



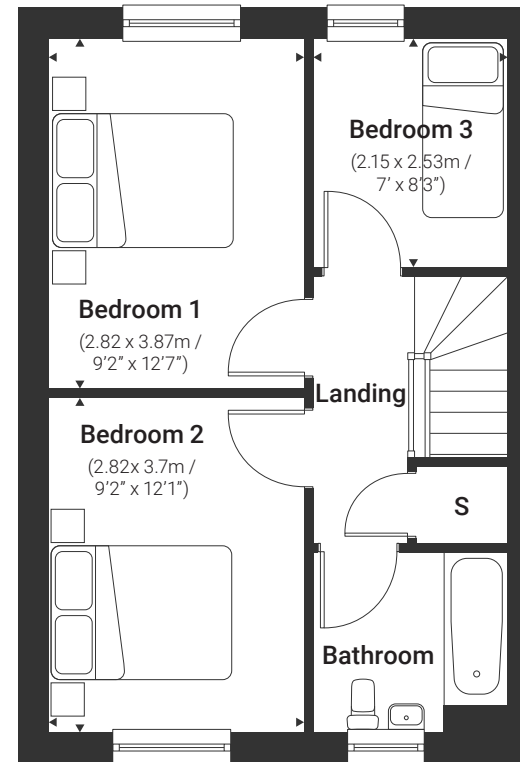
3 bedroom house

Chaffinch | The Meadows – Keresley

828 sq.ft / 76.92 sq.m
Parking | Unfurnished



Ground



First

These particulars were prepared from preliminary plans and specifications before the completion of the properties and are intended only as a guide. They may have been changed during construction and final finishes could vary. The dimensions are taken from the indicated points of measurement for guidance only and are an approximation. Images are indicative only.

S – Store WC – Toilet

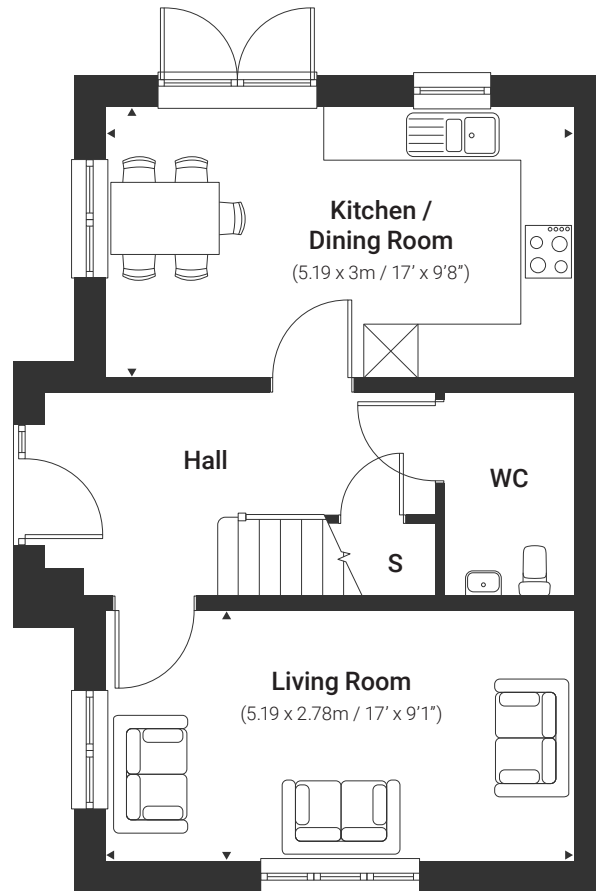
Rental
living by



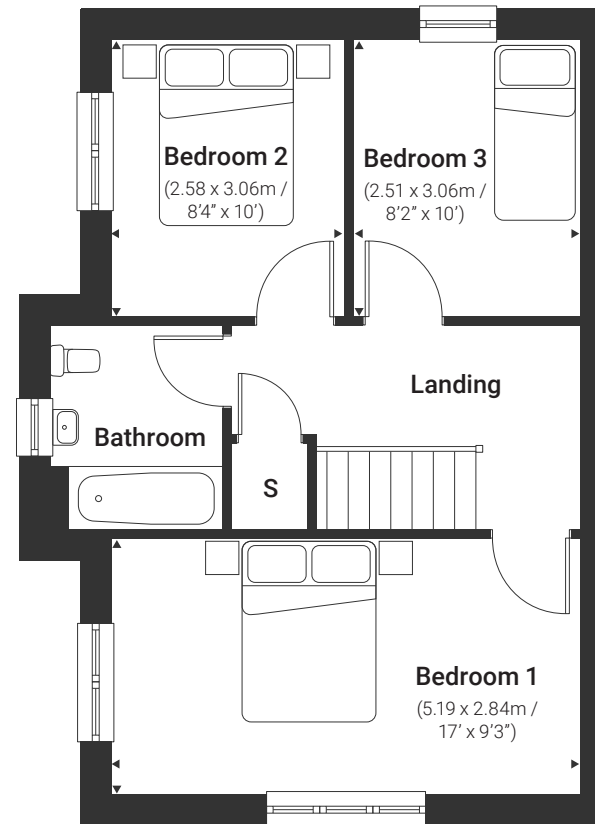
3 bedroom house

Eagle | The Meadows – Keresley

934 sq.ft / 86.77 sq.m
Parking | Unfurnished



Ground



First

These particulars were prepared from preliminary plans and specifications before the completion of the properties and are intended only as a guide. They may have been changed during construction and final finishes could vary. The dimensions are taken from the indicated points of measurement for guidance only and are an approximation. Images are indicative only.

S – Store WC – Toilet

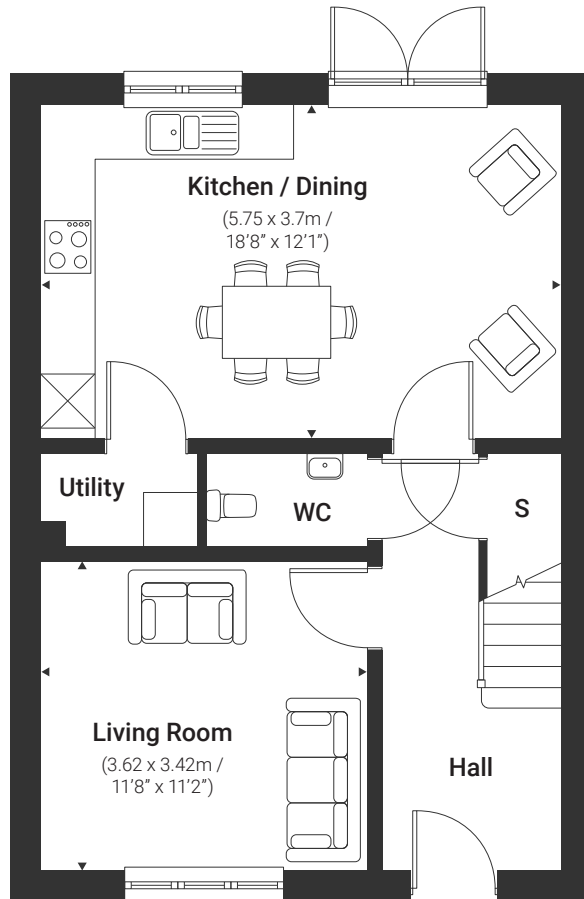
Rental
living by



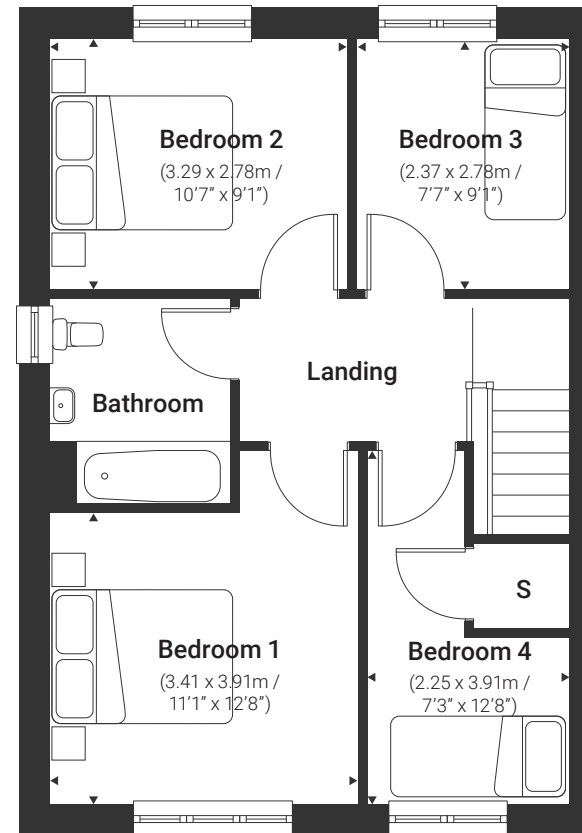
4 bedroom house

Crossbill | The Meadows – Keresley

1,012 sq.ft / 94.01 sq.m
Parking | Unfurnished



Ground



First

These particulars were prepared from preliminary plans and specifications before the completion of the properties and are intended only as a guide. They may have been changed during construction and final finishes could vary. The dimensions are taken from the indicated points of measurement for guidance only and are an approximation. Images are indicative only.

S – Store WC – Toilet

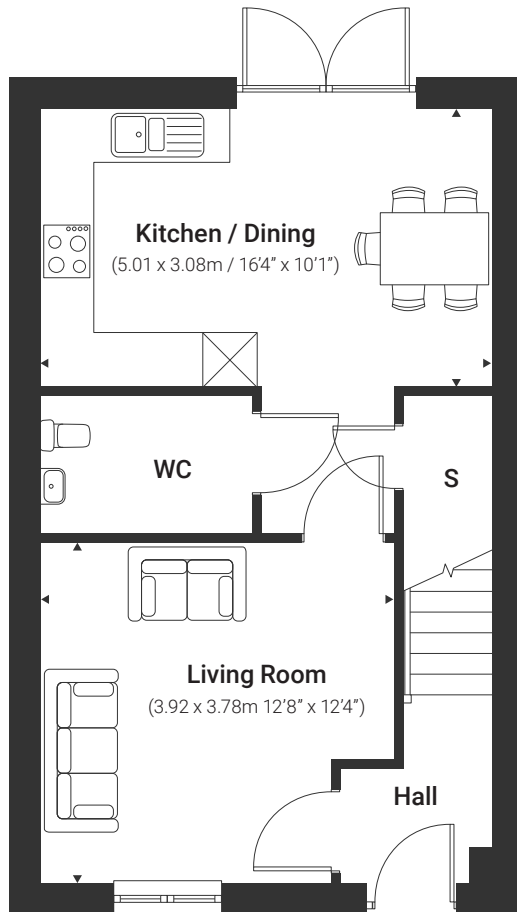
Rental
living by



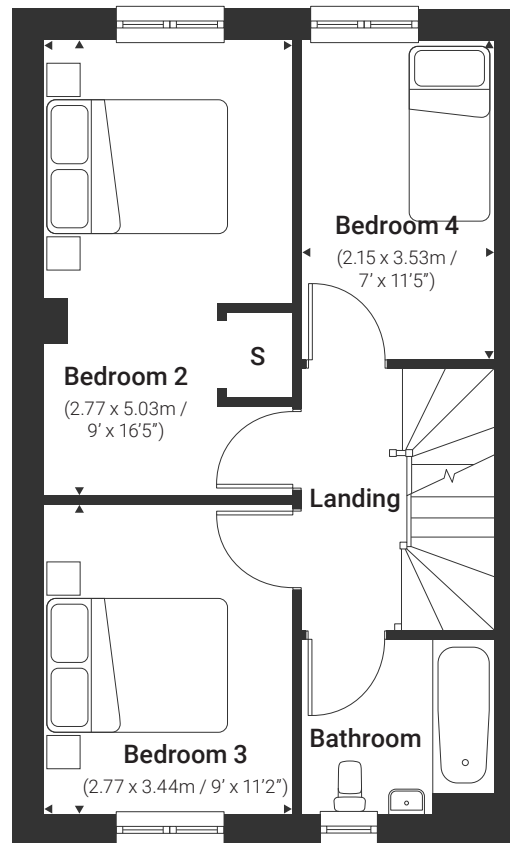
4 bedroom house

Violet | The Meadows – Keresley

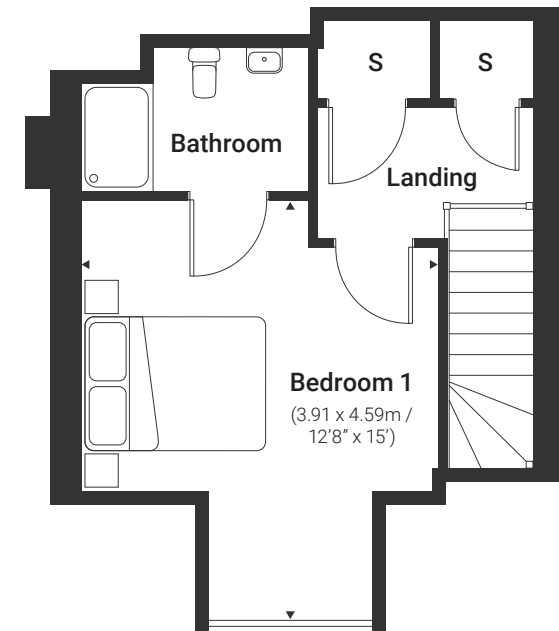
1,207 sq.ft / 112.13 sq.m
Parking | Unfurnished



Ground



First



Second

These particulars were prepared from preliminary plans and specifications before the completion of the properties and are intended only as a guide. They may have been changed during construction and final finishes could vary. The dimensions are taken from the indicated points of measurement for guidance only and are an approximation. Images are indicative only.

S – Store WC – Toilet

Rental living by

